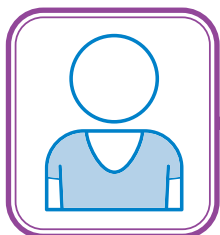


Measure Requirements

Children and adolescents who have had at least one comprehensive well-care visit with a PCP or an OB/GYN practitioner during the measurement year (2024). Each well-child visit should include a physical exam, health history, physical developmental history, mental developmental history, and health education/anticipatory guidance.



Member Requirements

Members who were with a practice for 11 consecutive months within the measurement year (2024) and who were 3 through 21 as of December 31 of the measurement year (2024).



QPM Targets*	
Band 1	87% – 100%
Band 2	82% – 86.99%
Band 3	78% – 81.99%
Band 4	71% – 77.99%
Band 5	<71%

See payment details in section 9 of guide.

*These targets include the performance of more than one measure. This represents the combined performance for all the measures in this category.

Options to close Care Gaps

- **Option 1:** Claim/encounter submission with appropriate well-care visit coding.

Child and Adolescent Well-Care Visits									
CPT® code	99381 99382	99383 99384	99385	99391	99392	99393	99394	99395	99461
ICD-10 CM	Z00.00 Z00.01	Z00.110 Z00.111	Z00.121 Z00.129	Z00.2 Z00.3	Z02.5 Z76.1	Z76.2			
HCPCS code	G0438	G0439							

CPT Copyright 2017 American Medical Association. All rights reserved. CPT® is a registered trademark of the American Medical Association.